



## AIRNET 54Mb CPE Bridge Point to Point kit



The Airnet 54Mb CPE Bridge point to point Kit is a high performance wireless Ethernet bridge system which creates a transparent wireless bridge between two networks. The bridge is transparent in that the LAN's appear to be connected together as though through a hardwired Ethernet connection. The bridge supports multiple MAC addresses and DHCP.

The Airnet 54Mb CPE Bridge point to point Kit comes fully configured as a bridge pair for true plug and play operation. No initial setup is necessary to create a working bridge connection between two Wireless or Wired LANs. 128Bit WEP security is configured and enabled for secure plug and play operation without the need for complicated setups. Full local or wireless remote configuration management is available thru an HTML Web Interface in order for the authorized user to be able to change passwords, encryption keys, output power, IP Address or various other settings. The unit can also be reconfigured as a high performance client bridge or router.

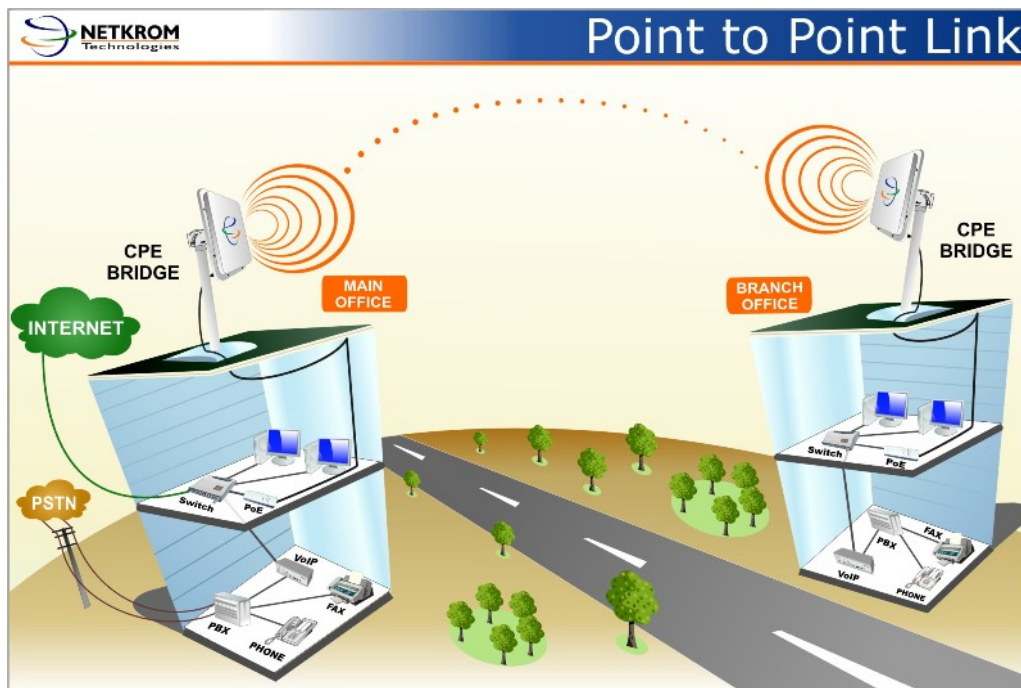
The Airnet 54Mb CPE bridge PTP kit includes everything that is needed to connect two wired or wireless LAN's over a distance from 0 to 15 miles (0 to 24Km). Included in the Airnet 54Mb CPE Bridge point to point Kit are (QTY 2) Airnet 54Mb CPE Bridge with power over Ethernet system, (QTY 2) Universal Pole Mount, (QTY 2) 75' Outdoor Rated CAT5e shielded cables and (QTY 2) PoE power supplies.

### Features:

- ▶ Outdoor and Waterproof Design
- ▶ Plug and Play – No complicated setup required
- ▶ 0 to 15 miles (0 to 24Km) Line of Sight Range
- ▶ 20Mb/Sec Real Throughput
- ▶ Multi SSID (up to 16 Virtual APs)
- ▶ Transparent Ethernet Bridge – Multiple MAC Support
- ▶ Full Power over Ethernet Support
- ▶ Outdoor Cat5e shielded Cables and Universal Mount for Wall or Pole
- ▶ Remote Management and Update Capable

### Applications:

- ▶ Medium range Backhaul
- ▶ Internet Access Sharing
- ▶ Connect Multiple Buildings
- ▶ Create a Mini Mesh Network
- ▶ Extend your Wireless or Wired LAN
- ▶ VoIP over Wireless Systems
- ▶ Remote Video and Media Servers





**Specifications:**

Model	AIR-PTPCPE500	AIR-PTPCPE500GHP	AIR-PTPCPE500AHP
<b>Ethernet Port</b>	10/100Base-TX (RJ-45)		
<b>Operating Frequency / Channel</b>	2.412 ~ 2.462GHz (FCC -US) 2.412 ~ 2.472 (ETSI - EU) 2.412 ~ 2.484 (TELEC - JAPAN) 4940 ~ 4990MHz (Public Safety Band) 5.15~5.35 & 5.725~5.850 GHz (FCC - US) 5.15~5.35GHz & 5.47~5.725GHz (ETSI - EU) 5.15~5.25GHz (TELEC - JAPAN) Programmable for different country regulations	2.412 ~ 2.462GHz (FCC -US) 2.412 ~ 2.472 (ETSI - EU) 2.412 ~ 2.484 (TELEC - JAPAN) Programmable for different country regulations	4940 ~ 4990MHz (Public Safety Band) 5.15~5.35 & 5.725~5.850 GHz (FCC - US) 5.15~5.35GHz & 5.47~5.725GHz (ETSI - EU) 5.15~5.25GHz (TELEC - JAPAN) Programmable for different country regulations
<b>RF Modulation</b>	<b>802.11b:</b> DSSS (BPSK, QPSK, CCK) <b>802.11g:</b> OFDM (BPSK, QPSK, 16-QAM, 64-QAM) <b>802.11a:</b> OFDM (BPSK, QPSK, 16-QAM, 64-QAM)	<b>802.11b:</b> DSSS (BPSK, QPSK, CCK) <b>802.11g:</b> OFDM (BPSK, QPSK, 16-QAM, 64-QAM)	<b>802.11a:</b> OFDM (BPSK, QPSK, 16-QAM, 64-QAM)
<b>RF Output Power</b>	20dBm @2.4GHz/18dBm@5GHz at Radio 32dBm@2.4GHz/33dBm@5GHz at EIRP	23dBm at Radio 42dBm at EIRP	23dBm at Radio 47dBm at EIRP
<b>Sensitivity</b>	-90dBm@6Mb -70dBm@54Mb at Radio		
<b>Data Rate</b>	54, 48, 36, 24, 18, 12, 11, 5.5, 2, 1Mbps		
<b>RF Operation Mode</b>	Access Point, Client Mode Wireless Routing Client, Gateway, Wireless Adapter, Transparent Client, Repeater		
<b>Range</b>	3 miles (5 Km)	15 miles (24 Km)	10 miles (16 Km)
<b>Data Security</b>	WEP 64/128/152 - bit Mac Address Filtering IEEE 802.1x—TLS, TTLS, PEAP WPA-PSK and WPA-EAP, WPA2 (with AES encryption technique)		
<b>Network Advanced Features</b>	IP Routing - static Routing, NAT and Port Forwarding (Wireless Routing Client and Gateway mode only) WDS - Wireless Distribution System PPPoE Client (Wireless Routing Client and Gateway mode only) PPTP for VPNs Network 802.1d Spanning Tree Protocol SNMP support DHCP Server and Client Bandwidth Control Pseudo VLAN technology Proprietary Long Distance Algorithm for ACK and CTS timeout adjustment support Firewall and Packet/URL Filtering (Wireless Routing Client and Gateway mode only) Load Balancing & Fail-Over Redundancy (Gateway mode only)		
<b>Link parameters</b>	Antenna alignment and RSSI Signal levels Site Survey Radio and Ethernet Traffic Statistics		
<b>Management</b>	Web and utility Windows based		
<b>Power</b>	Power over Ethernet – PoE 802.3af (AC 110~220/DC 48V) with surge protector		
<b>Dimensions</b>	10.75"x10.75"x2.6" in (267x267x67 mm)	18.5"x16.8"x2.5" in (470x 427x64mm)	
<b>Weight</b>	12 Lb (5.5 Kg) complete set	18 Lb (8.2 Kg) complete set	
<b>Cable</b>	75' (25m) length Outdoor CAT5E Rated Shielded Cable		
<b>Humidity</b>	-10-90%, (Operating)		
<b>Temperature</b>	-40 to 167 Deg F (-40 to 75 Deg C)		
<b>Electromagnetic Compatibility</b>	FCC Part 15 class B, CE Mark, ETSI 300 328		
<b>Antenna Characteristics</b>			
<b>Gain</b>	2.4 GHz: 12 dBi 5 GHz: 15 dBi	19 dBi	24 dBi
<b>Frequency Range</b>	2400 – 2500 MHz 4940 – 5850 MHz	2400 – 2500 MHz	4940 – 5850 MHz
<b>3db Beam Angle (E-Plane)</b>	<b>2.4GHz:</b> 43 Deg <b>5GHz:</b> 22 Deg	15 Deg	9 Deg
<b>3dB Beam Angle (H-Plane)</b>	<b>2.4GHz:</b> 43 Deg <b>5GHz:</b> 22 Deg	20 Deg	9 Deg
<b>Polarization</b>	Horizontal or Vertical		

**Ordering Information:**

- **AIR-PTPCPE500** AIRNET 54Mb Dual band 2.4/5GHz CPE Bridge Point to Point short range Kit (up 3 miles or 5 Km)
- **AIR-PTPCPE500GHP** AIRNET 54Mb 2.4GHz CPE Bridge Point to Point Long range Kit (up 15 miles or 24 Km )
- **AIR-PTPCPE500AHP** AIRNET 54Mb 5GHz CPE Bridge Point to Point mid range Kit (up 10 miles or 16 Km)